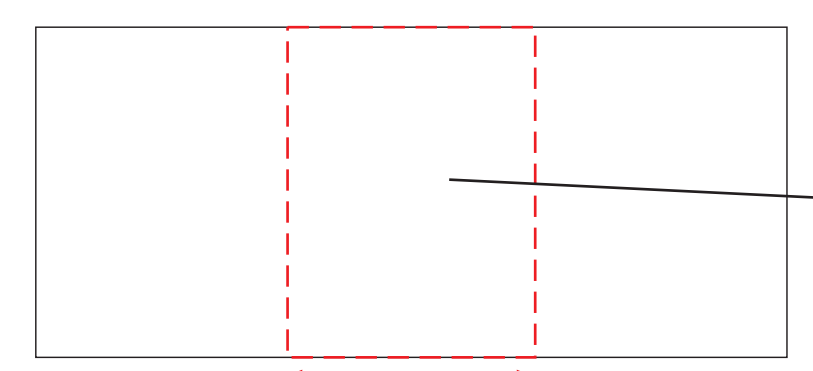
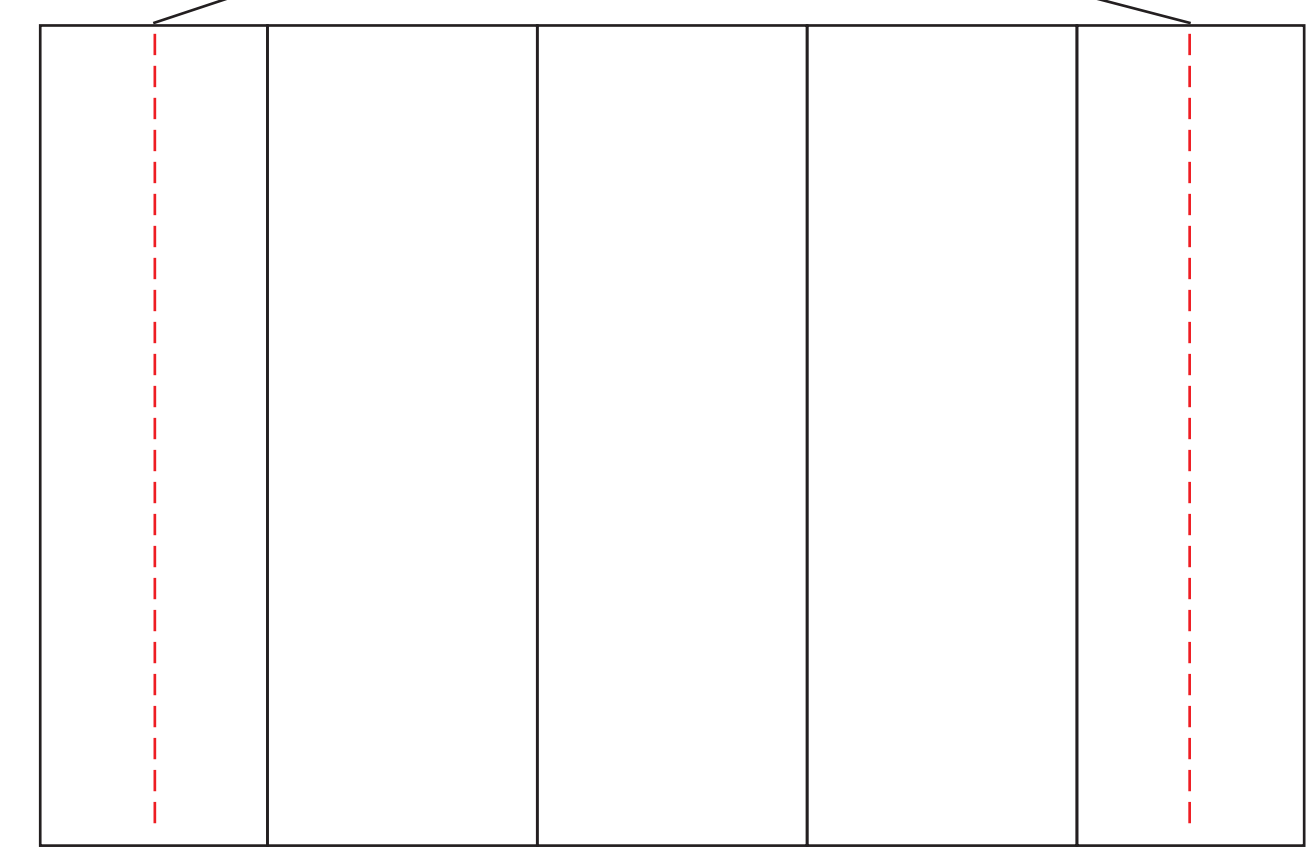


Only half of this panel
visible from front

Two lines point from this text to the dashed red lines in the diagram above, indicating that only half of the end panels are visible from the front.



600mm

A red double-headed arrow indicates the width of the middle section, which is 600mm.

Only this portion
visible from front

A line points from this text to the middle section of the diagram above, indicating that only this portion is visible from the front.

Flat Pop up 2 x 3 (PF2X3) File Template

(Scale 1 : 10)



Total Printing Size : 2804 x 2310 mm

Curve Pop up 2 x 3 (PC2X3) File Template

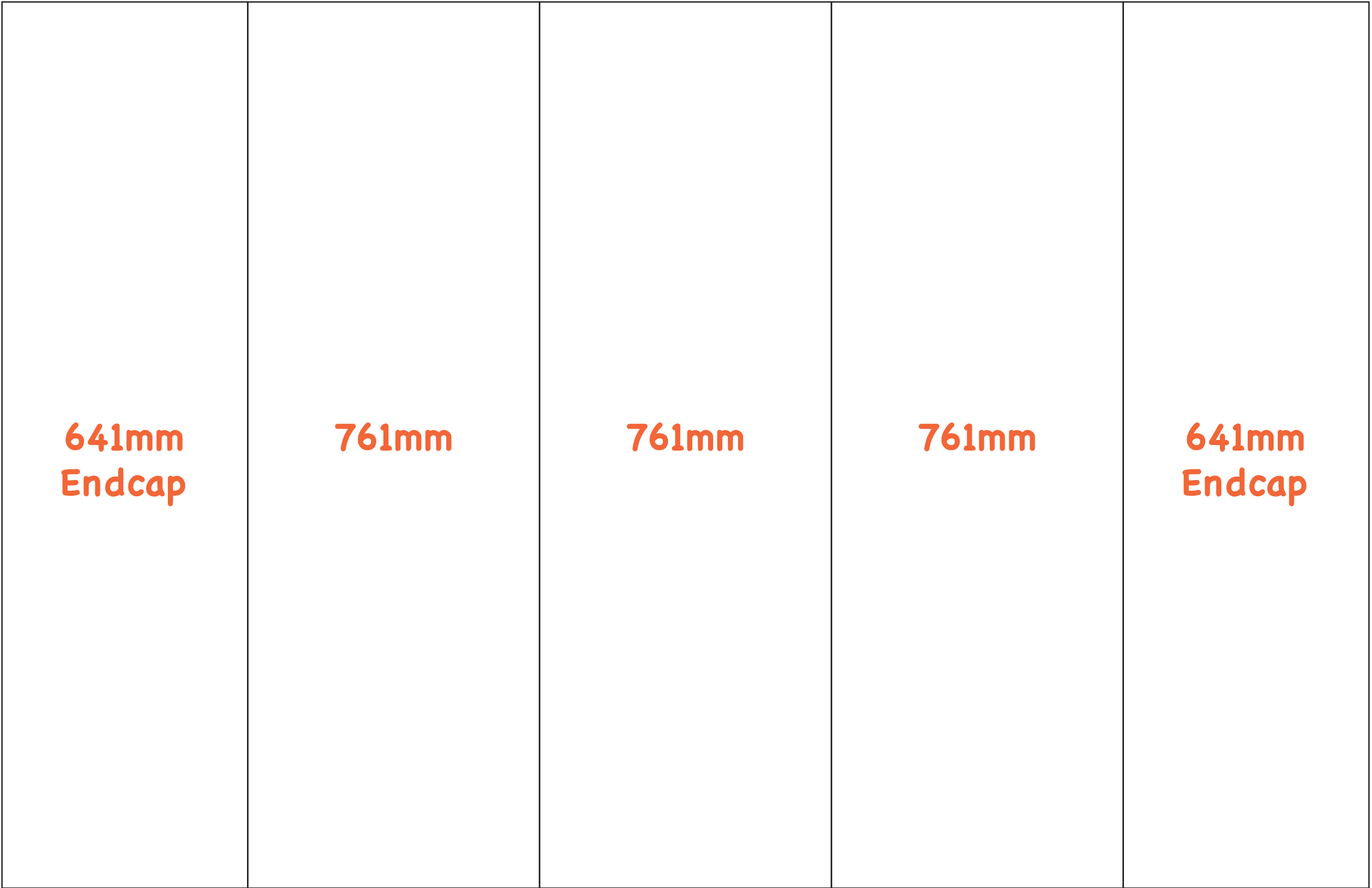
(Scale 1 : 10)



Total Printing Size : 2694 x 2310 mm

Flat Pop up 3 x 3 (PF3X3) File Template

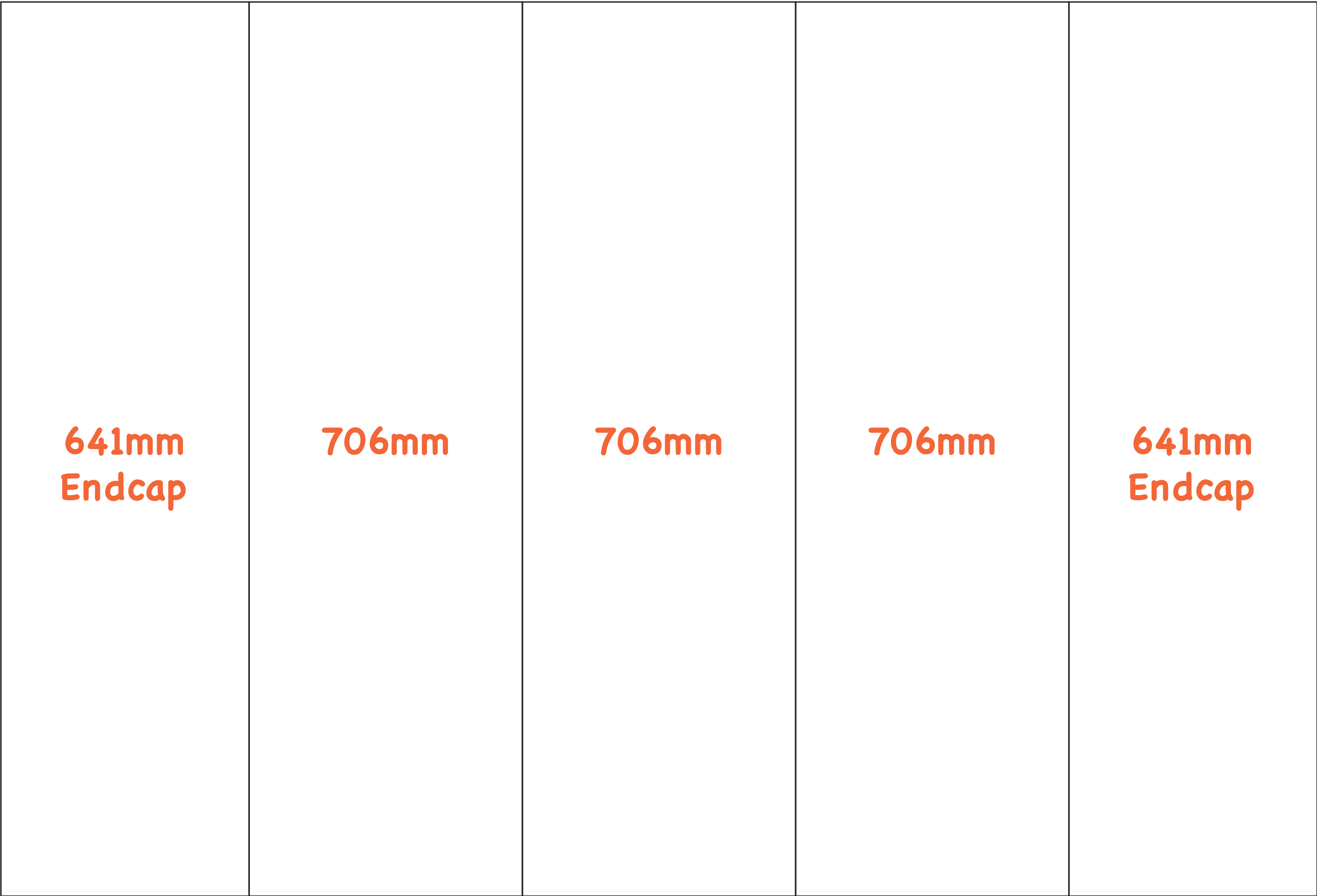
(Scale 1 : 10)



Total Printing Size : 3565 x 2310 mm

Curve Pop up 3 x 3 (PC3X3) File Template

(Scale 1 : 10)



Total Printing Size : 3400 x 2310 mm

Flat Pop up 3 x 4 (PF3X4) File Template

(Scale 1 : 10)

641mm Endcap	761mm	761mm	761mm	761mm	641mm Endcap
-----------------	-------	-------	-------	-------	-----------------

2310mm

Total Printing Size : 4326 x 2310 mm

Curve Pop up 3 x 4 (PC3X4) File Template

(Scale 1 : 10)

641mm Endcap	706mm	706mm	706mm	706mm	641mm Endcap
-----------------	-------	-------	-------	-------	-----------------

2310mm

Total Printing Size : 4106 x 2310 mm

Pop up Case Wrap File Template

(Scale 1 : 10)



Total Printing Size : 1810 x 790 mm